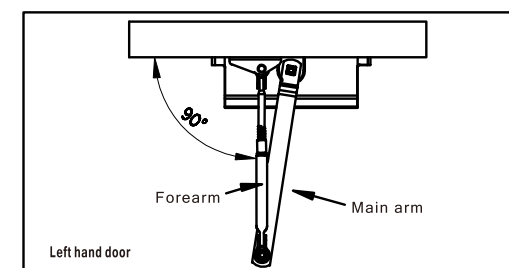
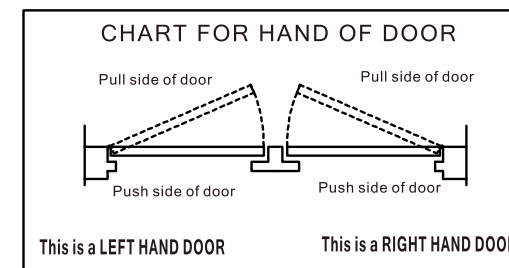
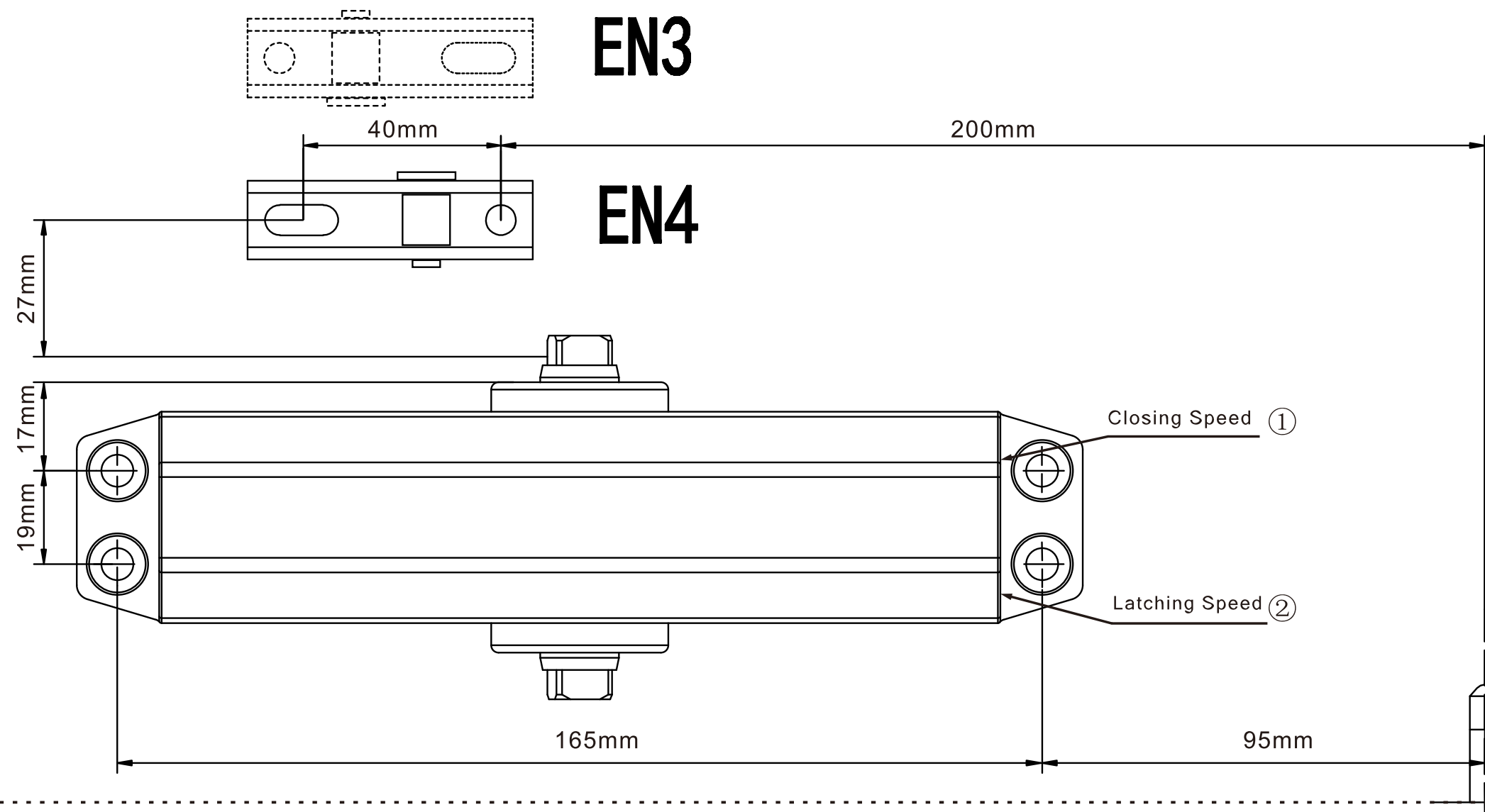


# Door Closer User manual (Right Door)

CE FC RoHS

ASF102S

Read the manual before usage and keep for future reference.



**1**

Put the paper template tight with the door and door frame (the side line that the arrowhead aims at the door) Mark on the door and door frame.

**2**

Drill  $\Phi 5$  hole against the mark, Tap M6 screw hole.

**3**

Fix the body on the door with 4 screws.

**4**

- Loose the screw of adjustable forearm.
- Fix the adjustable forearm on the door frame with two screws.
- Fix the main arm on the body with one screw.

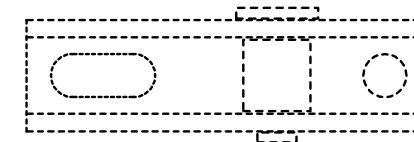
**5**

- Turn the Forearm and make the forearm with the body as  $90^\circ$
- Tight the screw of adjustable forearm.

**6**

Adjust door closing speed and latching speed :the user can according to their needed adjust the screw closing and latching speed individually.

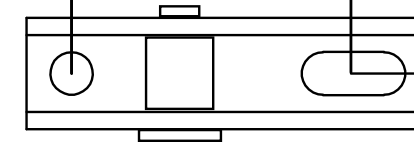
# EN3



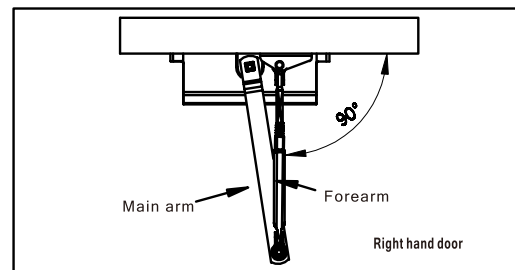
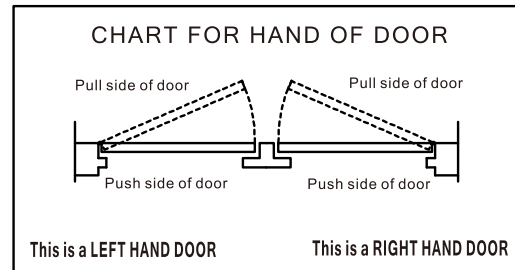
200mm

40mm

# EN4



27mm



## Right hand door



② Latching Speed

① Closing Speed

17mm

19mm

95mm

165mm

**1**

Top jamb Door  
The paper template  
Punch  
Hinge  
Hammer

Put the paper template tight with the door and door frame .(the side line that the arrowhead aims at the door) Mark on the door and door frame.

**2**

Electric drill  
Φ5 M6  
Aluminium or steel door  
Φ4  
Wooden door

Drill Φ5 hole against the mark, Tap M6 screw hole.

**3**

Body  
Screw for metal doors  
Screw for wooden doors

Fix the body on the door with 4 screws.

**4**

Screw for wooden doors  
Screw for metal doors  
Forearm  
Main arm  
Hinge

1. Loose the screw of adjustable forearm.
2. Fix the adjustable forearm on the door frame with two screws.
3. Fix the main arm on the body with one screw.

**5**

90°  
screw

1. Turn the Forearm and make the forearm with the body as 90°
2. Tight the screw of adjustable forearm.

**6**

Gear a cover  
Latching Speed Regulating Screw  
Closing Speed Regulating Screw

Fast (⊘) Slow  
Latching Speed      Closing Speed

Adjust door closing speed and latching speed :the user can according to their needed adjust the screw closing and latching speed individually.